



Equitable Life Insurance Co. - Formal Garden

BORIS TIMCHENKO
LANDSCAPE ARCHITECTS SITE



BORIS V. TIMCHENKO, A.I.L.A.

AND ASSOCIATES
PLANNERS WASHINGTON, D. C.

Mr. Boris V. Timchenko's main practice is in Washington, D. C., although he is a registered landscape architect in Pennsylvania and Florida. He is a member of the Maryland Association of Landscape Architects and has been a regular member of American Institute of Landscape Architects since May 1971.

These photographs are representative of the landscape architecture and land planning designed by Boris Timchenko and Associates.

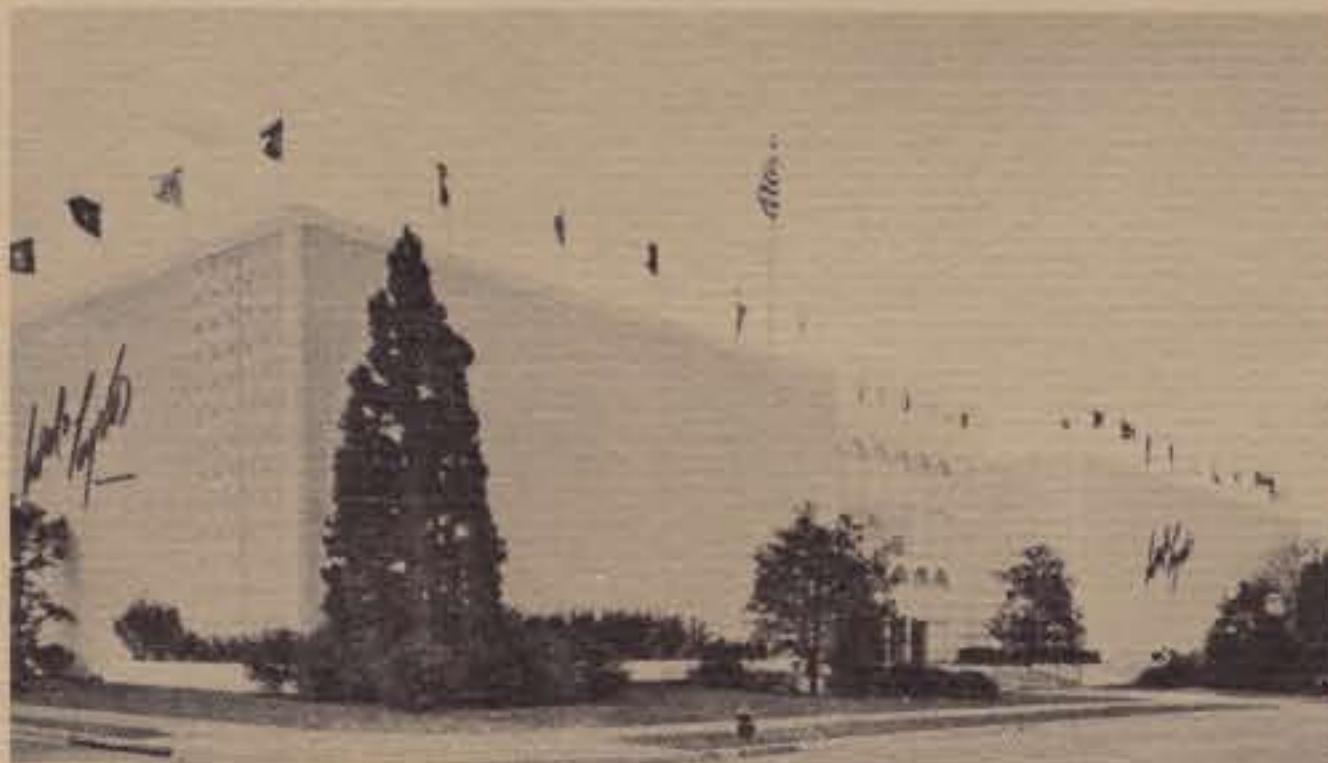
They show the design of sites for their maximum use and enjoyment, from both the aesthetic and economic viewpoints. Special physical problems created by a site, or the nature of its use in relation to human requirements, have a bearing on the ultimate design. This is true whether it is an intimate walled Georgetown garden, an industrial establishment, an office building, exhibition hall, or a subdivision.

Pictured here is an indication of the scope of landscape architecture and its relation to the allied professions -- architecture, engineering and sculpture. The results are the product of close cooperation between these professions and the contractor who brought them into being.

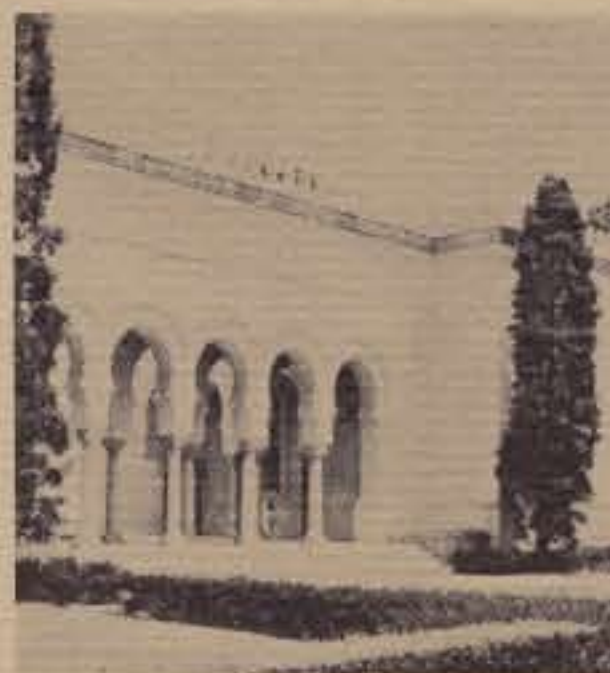
(Photos and excerpts from a brochure of Boris Timchenko and Associates. Copyright.)



NATIONAL CAPITOL FLOWER & GARDEN SHOW - An important event in the nation's capital for the past twenty years.



Lord and Taylor Department Store, Washington, D. C.



Washington Mosque



Washington Metropolitan Area Garden



Marriott Motor Hotel



A FEW EXAMPLES OF GARDENS - in the Washington Metropolitan Area



Washington Metropolitan Area Garden



An Example of Georgetown Garden