

THE
WHITE
HOUSE

THE
CAPITOL

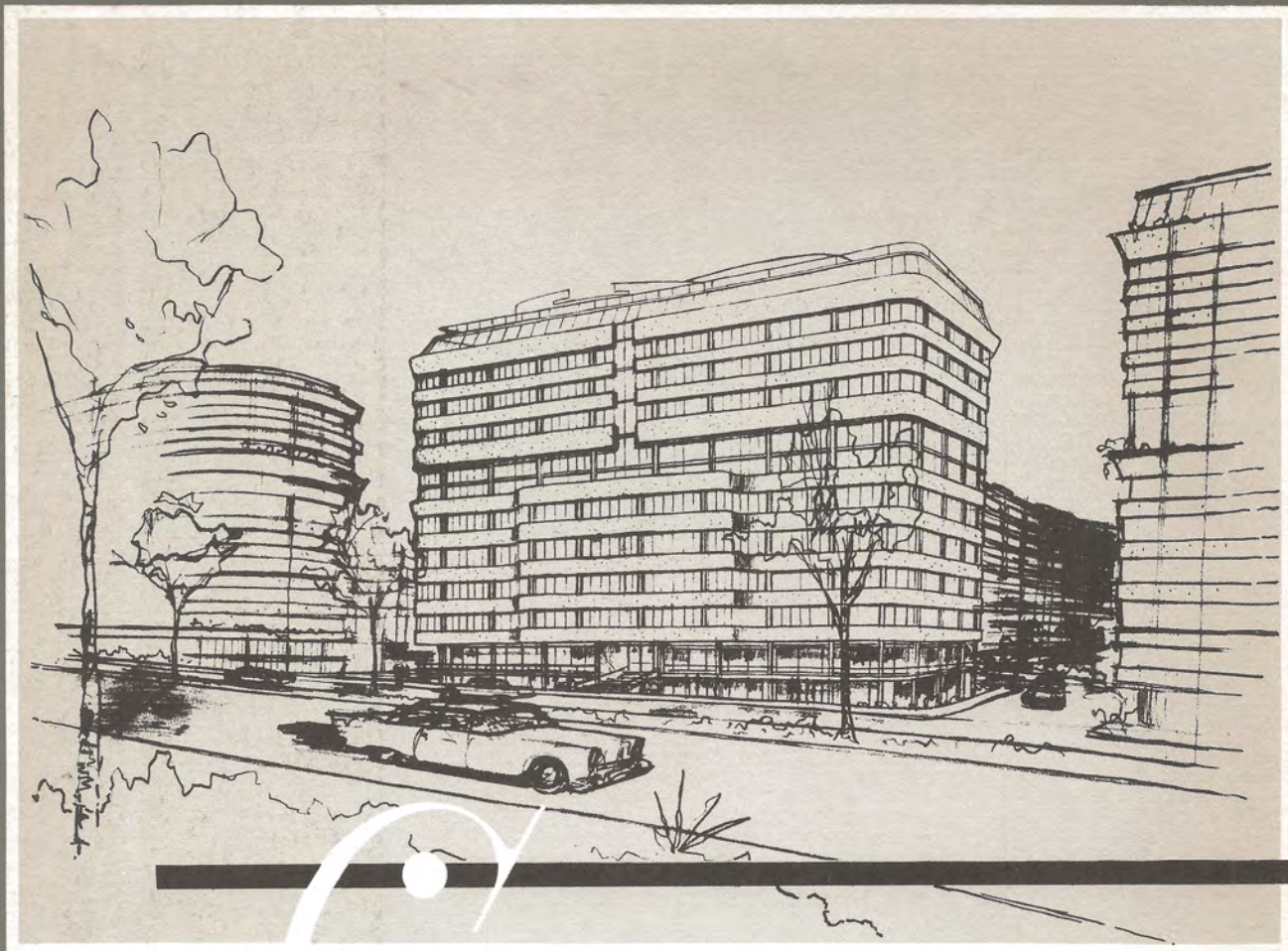
WATERGATE

OFFICE BUILDING

- *Washington's Most Elegant
Business Address* ●

2700 VIRGINIA AVE., N.W., WASHINGTON, D.C.

RIVERVIEW REALTY CORP.



Centrally Located in . . .

WATERGATE Office Building is far and away the most elegant . . . the most exciting office building ever to be built in the Nation's Capital. In design and function, it is an integral part of the luxurious Watergate "city within a city," offering a completely new concept in style and convenience. The complete Watergate community will also include three cooperative apartment buildings with residences available in almost 200 breathtaking designs; a residential hotel for guests who expect the ultimate in personal service; three delightful gourmet restaurants; and a complete selection of excellent stores and specialty shops for tenants and visitors. WATERGATE OFFICE BUILDING itself offers this same luxury and flexibility in office planning, utilizing the most modern concepts of structure and design. Wide sweeps of glass area will overlook Watergate's seven acres of landscaped park. Individually controlled heating and air conditioning, and sound absorbing ceilings insure year-round comfort and working efficiency. Four high-speed electronic elevators will whisk tenants and visitors to and from the luxurious lobby and underground parking areas without aggravating delays. Every tenant will be assured of distinguished company. Special purpose zoning requires that only professional persons and nonprofit organizations may be accommodated in the WATERGATE OFFICE BUILDING.

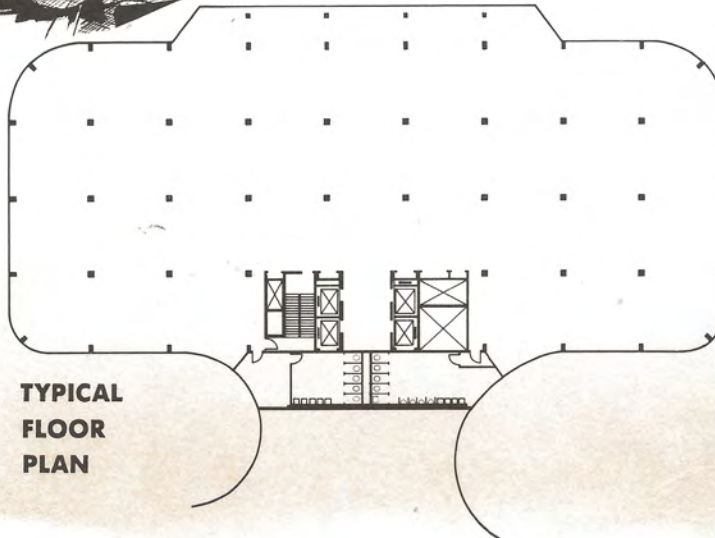


WATERGATE

OFFICE BUILDING



The Metropolitan Area of



TYPICAL FLOOR PLAN

FIRST CLASS
PERMIT NO. 35526
WASHINGTON,
D. C.

BUSINESS REPLY CARD

Postage will be paid by . . .

Riverview Realty Corp.

AND MAIL IT TO . . .

FILL OUT THE OTHER SIDE OF THIS CARD . . .

FOR MORE INFORMATION . . .

. . . detailed to your personal requirements, fill in the other side of this card and mail it. There is no obligation to you or your organization in any way.

RIVERVIEW REALTY CORP.

2700 VIRGINIA AVE., N. W., WASHINGTON, D. C.

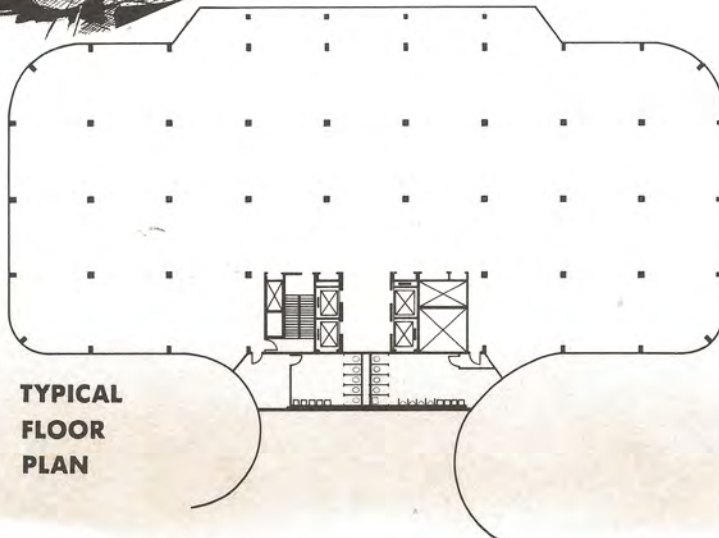


WATERGATE

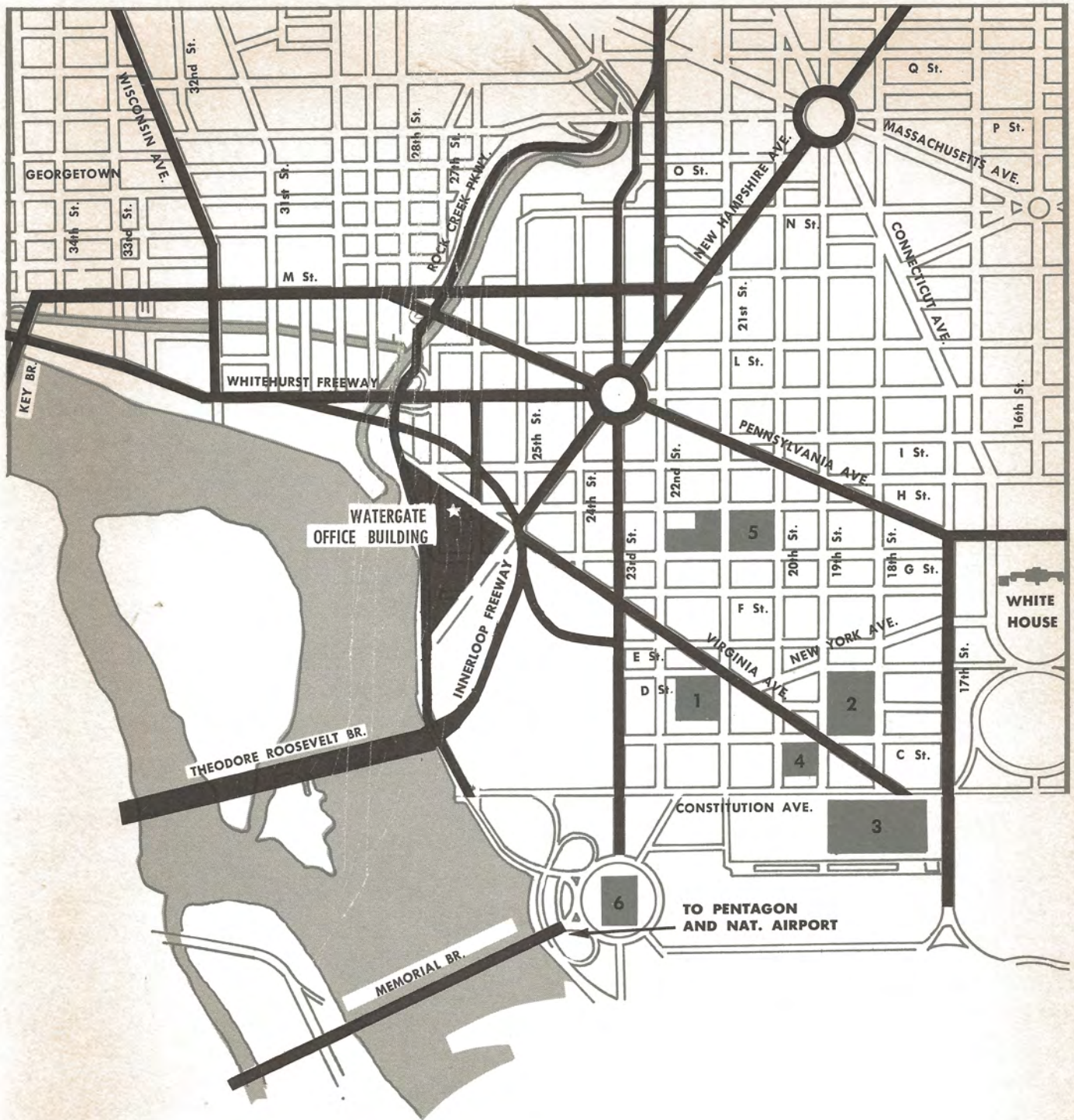
OFFICE BUILDING



The Metropolitan Area of Washington



WATERGATE Office Building includes 10 floors of approximately 15,000 net square feet, one floor at ground (lobby) level of approximately 14,500 net square feet, and a lower level (also above grade) of approximately 14,500 net square feet. There are handsomely appointed men's and women's lounges on each floor. All parking is underground in heated garages with total space for 1200 cars serving the WATERGATE COMPLEX. WATERGATE OFFICE BUILDING is within walking distance of the State, Navy and Interior Departments . . . and within a 5 to 10 minute drive of the Pentagon, National Airport and all major government offices in Washington and nearby Virginia. The new Dulles Airport can be reached in 20 minutes. Public transportation is at the door, offering quick access to nearby Virginia and suburban Maryland.




DESIGNED AND LITHOGRAPHED BY HENNADE

EXCLUSIVE AGENTS
Riverview Realty Corp.
 2700 Virginia Ave., N.W.
 Washington, D. C.
 Telephone 337-0020

Harold A. Lewis,
 President

MAP LOCATIONS

- 1 The State Department. 2 The Interior Department.
- 3 The Navy Department. 4 National Science Foundation.
- 5 The George Washington University. 6 Lincoln Memorial.



A Look Into The Future

This is the first step in world famed architect Luigi Moretti's first major design in the United States . . . Watergate on the Potomac.

Inspired by the setting . . . a setting historically reserved for Washington's great public buildings and monuments . . . Professor Moretti has created a "city" that is in total harmony with the splendor of its surroundings.

Upon completion, there will be five high rise buildings . . . three luxury cooperative apartments, one residential hotel and a modern office building. There will also be 13 one-story villas and a glass-enclosed dining pavilion. All designed in a free flowing manner that naturally complements the shoreline and special beauty of our Nation's Capital.

Most important, Watergate has purposely limited its buildings to only one-third of its 10 acres. The rest is devoted entirely to landscaped park, beautiful fountains and reflecting pools. A setting entirely appropriate to Washington's most definitive address . . . in Washington's most enviable location, Watergate . . . in Foggy Bottom on the Potomac.